

ICT Enabled Progress Monitoring System

on

Horticulture Mission for North Eastern and Himalayan States (HMNEH)

Introduction

Department of Agriculture & Cooperation, Ministry of Agriculture is implementing a Centrally Sponsored scheme Horticulture Mission for North East and Himalayan States for overall development of Horticulture. The mission covers States including Sikkim and three Himalayan states namely Jammu & Kashmir, Himachal Pradesh and Uttarakhand. The mission addresses entire spectrum of horticulture right from production to consumption through backward and forward linkages.

The objective of the scheme is to improve the production and productivity of horticulture crops by harnessing the potential of the region. Special emphasis is to be given to “Low Volume, High Value, and Less Perishable Horticulture Crops”. Through this Mission, a horticulture based farming system is to be developed, thereby providing viable and ample opportunities for employment, especially for women, besides improving the productivity of land.

The programmes under the HMNEHS have been evolved in consultation with all the stakeholders, including the State Governments. The HMNEHS strives to address the issues related to technology and technological development, demonstration of technologies, production of quality planting material, organic farming, efficient water management, plant health, etc. in order to adopt compact/cluster area based approach for production of horticultural crops. It covers plantation works, area expansion, post harvest management, processing, value addition including that of medicinal and aromatic plants, marketing and exports. The NER is known to use minimum fertilizers and pesticides. This weakness is proposed to be converted into strength through appropriate technology-based development and adoption of organic management of Horticulture development activities.

Goals and Objectives of the Mission

The following goals are envisaged:

- a. To establish convergence and synergy among numerous ongoing governmental programmes in the field of Horticulture development. In order to achieve Horizontal and Vertical Integration of these programmes, it is necessary to ensure adequate, appropriate, timely and concurrent attention towards all the links in the production, post harvest and consumption chain.
- b. To maximize economic, ecological and social benefits from the existing investment and infrastructure created for Horticulture development.
- c. To promote ecologically sustainable intensification and economically desirable diversification of horticulture and development of skilled employment to generate value addition.
- d. To facilitate and promote the development and dissemination of eco technologies based on the blending of traditional wisdom and technology with frontier knowledge such as Bio-Technology, Information Technology and Space Technology.
- e. To provide the mission links in ongoing Horticulture development projects.

The Specific Objectives of the Horticulture Mission are:

- a. To improve productivity and quality of Horticulture crops through adoption of improved varieties/technologies and up gradation of existing production/farming technologies.
- b. To reduce post harvest losses, and improve market ability of the produce and its availability to consumers.
- c. To promote better utilization and increased consumption of the produce to ensure higher returns to farmers/producers and better nutritional health to the people.
- d. To promote exports and export-oriented growth.
- e. To develop a strong base for transfer of technology and human resource development to support development activities.

ICT based Monitoring

The scheme is being monitored by Horticulture Division, Department of Agriculture & Cooperation (DAC), Ministry of Agriculture. DAC has entrusted NIC with the responsibility of evolving an effective monitoring system for the scheme using Information and Communication Technologies by networking

NE and Himalayan states. The timely information flow between NE and Himalayan states and DAC will ensure better monitoring of Horticulture development efforts in the NE and Himalayan states. The necessary information and data will be stored centrally on web enabled database so that the required reports and information may be accessed from anywhere, anytime through internet.

Objectives

- a. To provide NE and Himalayan states with adequate Information and Communication Technology infrastructure.
- b. To provide NE and Himalayan states with customized application software for monitoring the scheme.
- c. Development of a database at central location for storing all the necessary information and data related to scheme.
- d. Development of web pages on various aspects of HM accessing information from any where, any time.
- e. To train the persons from NE and Himalayan states to utilize the ICT enabled Progress Monitoring System.

Project Implementation Strategy

- a. The project is being implemented in Eight North Eastern States and Three Himalayan States through National Informatics Centre on a turn-key basis.
- b. The responsibilities of NIC include procurement, installation and maintenance of the hardware & software, providing connectivity, imparting training to computer operators and implementing customized application software at respective states in the North Eastern and Himalayan States.
- c. The application software would facilitate transmission of information between NE and Himalayan states and DAC. Data and other related information from NE and Himalayan states will be maintained centrally by DAC and database and web server will also be maintained by DAC for information dissemination.

Networking

- a. Tech Mission Cell in Horticulture Division, Department of Agriculture & Cooperation is on the LAN of Krishi Bhavan which in turn is connected to internet.

- b. All the Eight NE and Three Himalayan states have been connected to the NICNET through Internet for uploading data,.
- c. The project is being extended to District Level.
- d. Wherever feasible the connectivity has been provided through local NIC offices.

Existing System

- a. Since National Informatics Centre has established an effective Nationwide Computer Network known as NICNET with all districts in the country as the network nodes. The same can be utilized to avoid the time delay and to gain more vital information and also to maintain Central Database for Historical Data Processing.
- b. NIC's Agricultural Informatics Division has developed application software called 'ICT based Monitoring System for Horticulture Mission on for North East & Himalayan States' (HMNEHS)
- c. Application is hosted on latest Intel Xeon based servers installed in NIC Data centre. The system has been developed using .NET4.0, Crystal Report 13.0 and SQL Server 2008.
- d. The services are available on 24x7x365 basis. The application is web based having a National Coverage which can be accessed from any where with Internet connectivity.
- e. Alerts are generated with automatic mailing facility to defaulter states.
- f. Complete end to end service and support is provided regularly.
- g. No additional Client component of the software is required at user's desktop PC in the NE and Himalayan states.
- h. The server maintains the Horticultural development database using SQL Server database management system software. User will be required to enter the data from any desktop PC and once the data is entered in to the computer required reports may be generated and printed automatically with minimal user intervention.
- i. The central database will have data from all the NE and Himalayan states.
- j. A set of web pages have been developed to access the latest information about the scheme from any where, at any time using internet services.

System Requirements

Client

Pentium Core i3
RAM – 2 GB or Higher
Hard Disk – 500 GB or Higher
Operating System: Windows 7

Server

Intel Xeon (Installed at NIC Data Centre)

About the System

- a. The proposed system is web based data entry and report generation software for scheme monitoring.
- b. This application software enables a novice user to enter the scheme data state wise and print desired reports easily.
- c. The data should be entered monthly.
- d. The Scheme is being extended to all Districts to reach the grassroots level.

Getting Started with the System

Procedure 1

- a. Start your PC and Click Start button and selecting the Run option.
- b. Type <http://tmnehs.gov.in/> and press enter key.
- c. (Start ⇒ Run ⇒ <http://tmnehs.gov.in/>)

OR

Procedure 2

- a. Start your PC and run the Internet Explorer
- b. Select the Address Bar and type the following address <http://tmnehs.gov.in/> in the address bar.

This will open the Internet Explorer window shown below



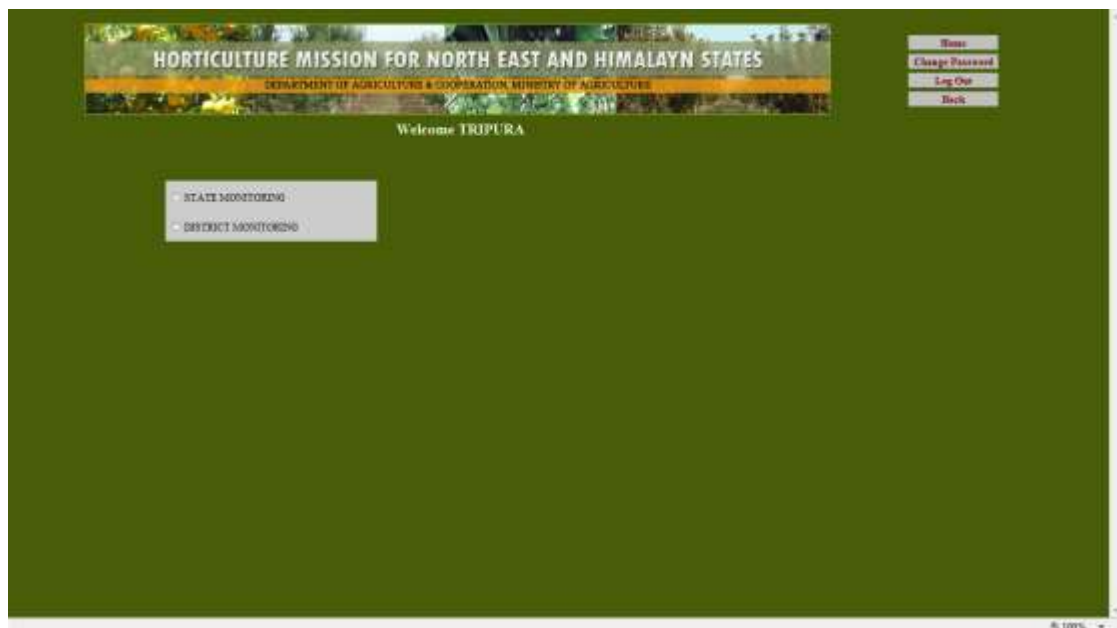
c. Then Select Progress Monitoring from the top bar and click on it. This will open a window like shown below



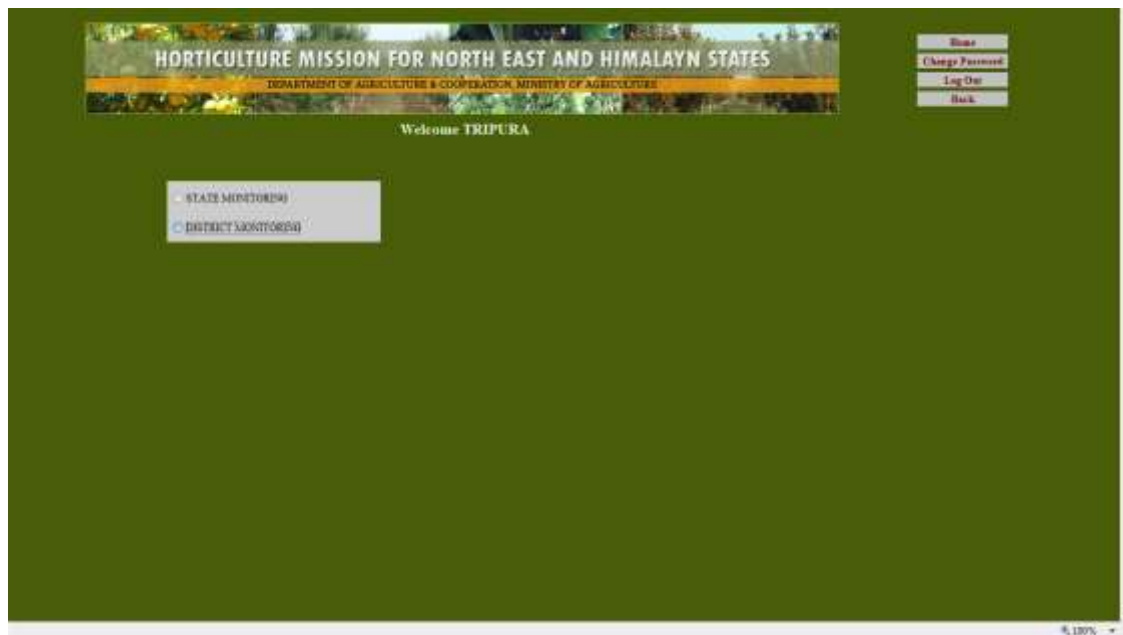
It is a login page, which will verify your credential. Every user in the NE and Himalayan states will be given user name and password. Users in the NE and Himalayan states can get their user name and password from Headquarter. In the login window every state has to enter **captcha letters** in the textbox and it has to be refreshed in every subsequent login. After entering successful user name and password you will get a Page as follows.



After this process, server will authenticate your user name and password. After successful verification you will get a home page as follows.



For district level data entry we select District Monitoring Option as follows:



Then we get another screen for district level module.



For district level physical and Financial achievement data entry we select first physical and financial Achievement option then we go in data entry module as:

HORTICULTURE MISSION FOR NORTH EAST AND HIMALAYN STATES
DEPARTMENT OF AGRICULTURE & COOPERATION, MINISTRY OF AGRICULTURE

Welcome TRIPURA

State: District: Financial Year: Month:

Component	Unit	Physical Target	Physical Achievement	Financial Target	Financial Achievement
A. Research and Development					
1. Production of Nucleus/Basic Seed and Planting Material	Qts				
2. Standardization of Improved Production Technologies	Nos.				
3. Technology Refinement and Imparting of Training to Extension Functionaries	Nos.				
4. Acquisition of Technologies including import of planting material from other countries	Nos.				
B. Production of planting material					
1. Public sector					
(a) Model/Bag Nursery (4 ha)	Nos.				
(b) Model/Bag Nursery (3 ha)	Nos.				

For viewing the report of entered data you have to select only View Report Button then the following screen will appear.

Report for the State - Tripura , Distrcit - North Tripura Financial Year 2011-12 and Month OCT

Component	Unit	Physical Target	Physical Achievement	Financial Target	Financial Achievement
A. Production of planting material					
1. Public sector					
(a) Small Nurseries (1 ha)	Nos.	2		12.50	
2. Private Sector					
(a) Vegetable and Rhizomatic spices seed production					
(i) Open Pollinated Crops	ha	1.00		0.23	
B. Area Expansion					
1. Fruits					
(a) High density Planting (mango, guava, litchi, ber, etc)					
(i) New Plantation	ha	107.00	107.00	36.52	36.52
(b) Banana (sucker), Papaya, Pineapple etc.					
(i) New Plantation	ha	190.00	190.00	95.06	95.06
(c) Fruit crops other than cost intensive crops using normal spacing					
(i) New Plantation	ha	5.00	5.00	0.90	0.90
(ii) 2nd Year Maintenance	ha	-347.00		31.93	
(iii) 3rd Year Maintenance	ha	-205.00		11.07	
2. Vegetables					
(a) Hybrid	ha	585.00	380.00	197.44	128.25
3. Spices					
(a) Seed spices	ha	90.00		36.88	
(b) Rhizomatic spices	ha	58.00		10.50	
(c) Perennial spices	ha	6.00		1.80	
4. Reforestation / Re-planting of semi-plantations					
	ha	112.00		16.60	

District Wise Monthly Data Reporting status

District Wise Monthly Data Reporting Status for the Year 2011-12

S.No.	District Name	Apr	May	Jun	Jul	Aug	Sep	Oct	Nov	Dec	Jan	Feb	Mar
1	District	⊗	⊗	⊗	⊗	⊗	⊗	⊗	⊗	⊗	⊗	⊗	⊗
2	North Tripura	⊗	⊗	⊗	⊗	⊗	⊗	⊗	⊗	⊗	⊗	⊗	⊗
3	South Tripura	⊗	⊗	⊗	⊗	⊗	⊗	⊗	⊗	⊗	⊗	⊗	⊗
4	West Tripura	⊗	⊗	⊗	⊗	⊗	⊗	⊗	⊗	⊗	⊗	⊗	⊗
Total Reported		-	-	-	-	-	-	4	2	4	4	4	4
Total Non Reported		4	4	4	4	4	4	-	-	-	-	-	-

All District Summary Monthly Report

Statewise All District Monthly Progress Report (PTPA & FTFA)					
State : Tripura		Financial Year : 2011-12		Month : October	
Components	Unit	Physical Target	Physical Achievement	Financial Target	Financial Achievement
I. Area Expansion					
(A) Fruits					
(a) Banana (sucker), Papaya, Pineapple etc.					
(i) New Plantation	ha	-	910.00	-	422.44
(b) Fruit crops other than cost intensive crops using normal spacing.					
(i) New Plantation	ha	-	90.00	-	16.20
(c) High density Planting (mango, guava, litchi, ber, etc)					
(i) New Plantation	ha	-	822.00	-	295.92
(B) Vegetables					
(a) Hybrid					
	ha	-	2254.00	-	760.74
2. Mission Management					
(A) Project management including additional manpower & project preparation cost					
	Nos.	-	-	-	4.70
Total					1500.00

All District Report for Selected State

All District Report for Selected State - Tripura and Financial Year - 2011-12													
Components	Unit	West Tripura		South Tripura		Dakshin		North Tripura		Tripura			
		PA	FA	PA	FA	PA	FA	PA	FA	PT	FA		
A. Production of planting material													
1. Public sector													
(a) Model/Big Nursery (4 ha)	Nos.	7	35.00	7	35.00					0.00	10.00	0.00	120.00
(b) Small Nursery (1 ha)	Nos.	18	110.00	9	54.45	4	18.75	4	22.75	0.00	26.00	0.00	149.75
(c) Rehabilitation of Existing Tissue Culture units	Nos.	3	45.00							0.00	2.00	0.00	30.00
(d) True Potato Seed Center	Nos.	1	75.00							0.00	2.00	0.00	50.00
2. Private Sector													
(a) Model/Big Nursery (2 ha)	Nos.	4	20.00	1	4.55					0.00	4.00	0.00	19.50
(b) Small Nursery (1 ha)	Nos.	13	38.25	10	28.63	3	6.26	3	8.13	0.00	20.00	0.00	53.13
(c) Vegetable and Rhizomatic spices seed production													
(i) Open Pollinated Crops	ha	27.00	6.09	18.00	4.05	3.00	0.69	3.00	0.69	0.00	34.00	0.00	7.68
3. Import of planting material for trial and demonstration purpose													
(a) State Government, Grower Associations recognized by NHBMGA, PSU	Project		19.50				5.00			0.00	0.00	0.00	24.50
B. Area Expansion:													
1. Fruits													
(a) High density Planting (mango, guava, litchi, ber, etc)													
(i) New Plantation	ha	1900.00	664.00	1300.00	468.00	375.00	135.00	535.00	192.60	0.00	3288.00	0.00	1183.68
(b) Banana (sucker), Papaya, Pineapple etc.													
(i) New Plantation	ha	2050.00	900.00	850.00	395.75	700.00	343.15	950.00	475.30	0.00	3640.00	0.00	1689.76
(c) Fruit crops other than cost intensive crops using normal spacing													
(i) New Plantation	ha	250.00	45.00	150.00	27.00	25.00	4.50	70.00	4.50	0.00	405.00	0.00	64.80
(ii) 2nd Year Maintenance	ha	580.00	58.60	644.00	64.60	984.00	100.88	410.00	41.40	0.00	3567.00	0.00	153.96

Monthly All District Report for Selected State

Monthly All District Report for Selected State - Tripura and Financial Year - 2011-12 and Month - OCT

Components	Unit	West Tripura		South Tripura		Dhalai		North Tripura		Tripura			
		PA	FA	PA	FA	PA	FA	PA	FA	PT	PA	FT	FA
		A. Area Expansion											
1. Fruits													
(a) High density Planting (mango, guava, litchi, ber, etc)													
(i) New Plantation	ha	380.00	176.00	260.00	93.60	75.00	27.00	107.00	38.42	0.00	822.00	0.00	295.92
(b) Banana (sucker), Papaya, Pineapple etc.													
(i) New Plantation	ha	410.00	180.00	170.00	78.75	140.00	68.63	190.00	95.06	0.00	910.00	0.00	422.44
(c) Fruit crops other than cost intensive crops using normal spacing													
(i) New Plantation	ha	50.00	9.00	30.00	5.40	5.00	0.90	5.00	0.90	0.00	90.00	0.00	16.20
2. Vegetables													
(a) Hybrid	ha	875.00	295.32	705.00	237.94	294.00	99.23	380.00	128.25	0.00	2254.00	0.00	765.74
B. Mission Management													
1. Project management including additional manpower & project preparation cost	Nos.		1.50		1.20		1.00		1.00	0.00	0.00	0.00	4.70

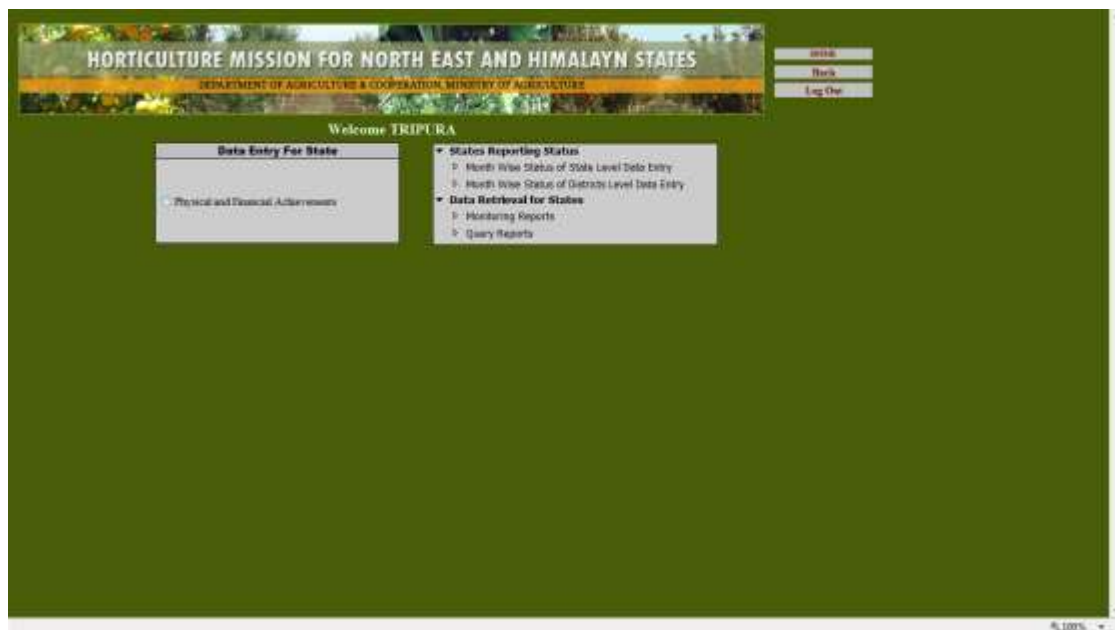
District Wise Progress Monitoring Report



For **State level** Data entry we have to select State Monitoring. In state level only State level components data entry is possible, other components are locked for district level.



After Selecting State level Module we get another module, in which we can select our choice for further work with. In this window we will select module for data entry on state level.



Only state level data, entry is done for Physical and Financial achievements for every scheme component. This data entry may be done monthly to monitor the scheme yearly based on months.

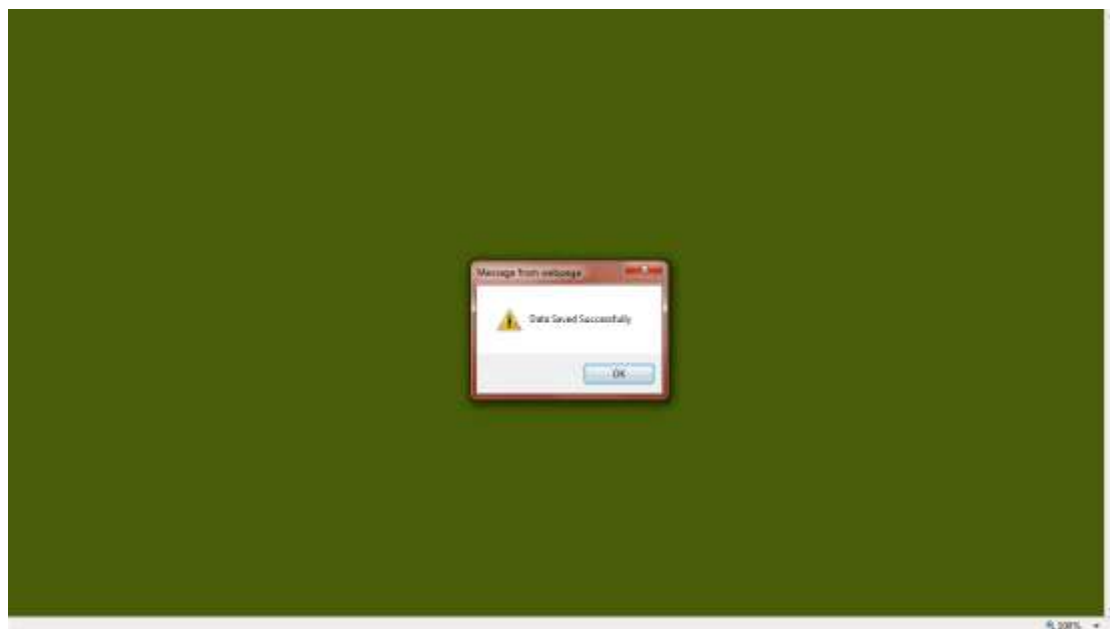
HORTICULTURE MISSION FOR NORTH EAST AND HIMALAYAN STATES
DEPARTMENT OF AGRICULTURE & COOPERATION, MINISTRY OF AGRICULTURE

Welcome TRIPURA

State Name: Financial Year: Month:

Components	Unit	Physical Target	Physical Achievement	Financial Target	Financial Achievement
A. Research and Development					
1. Production of Nucleus/Basic Seed and Planting Material	Qn.		<input type="text"/>		<input type="text"/>
2. Standardization of Improved Production Technologies	Nos		<input type="text"/>		<input type="text"/>
3. Technology Refinement and Imparting of Training to Extension Functionaries	Nos		<input type="text"/>		<input type="text"/>
4. Acquisition of Technologies including import of planting material from other countries	Nos		<input type="text"/>		<input type="text"/>
B. Production of planting material					
I. Public sector					
(a) Model/Big Nursery (4 ha)	Nos		<input type="text"/>		<input type="text"/>
(b) Model/Big Nursery (3 ha)	Nos		<input type="text"/>		<input type="text"/>
(c) Model/Big Nursery (2 ha)	Nos		<input type="text"/>		<input type="text"/>
(d) Small Nursery (1 ha)	Nos		<input type="text"/>		<input type="text"/>
(e) Setting up of New Tissue Culture Units	Nos		<input type="text"/>		<input type="text"/>
(f) Rehabilitation of Existing Tissue Culture units	Nos		<input type="text"/>		<input type="text"/>

Select Financial Year, Month from respective combo boxes shown above and then select Get Data button for entering the data for the physical and Financial Achievement. Enter the compiled data in the Physical Achievements and Financial Achievements columns. Finally click Save Data button to save the changes you made to Physical Achievements & Financial achievements columns. Then you will get a screen as follows.



This action will confirm that your data is saved on the server.

Similarly, data entry may be done for other categories of components also. You just have to select the category of component then enter the required data and finally click submit button to save the changes.

For viewing the report of entered data you have to select only View Report Button then the following screen will appear.

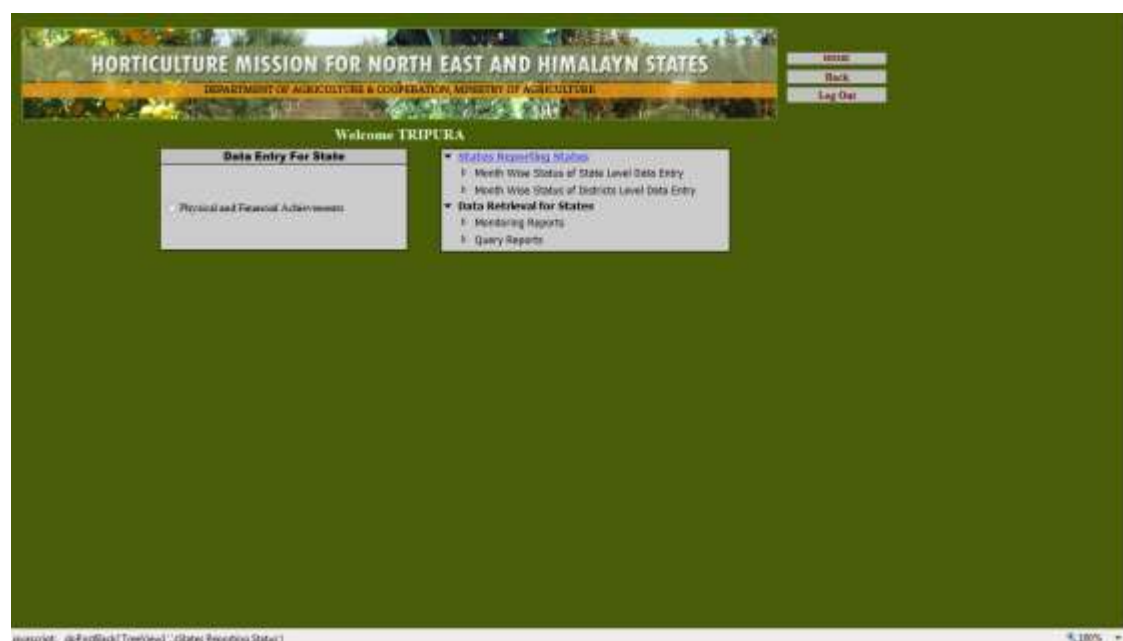
Report for the State - Tripura , Financial Year 2011-12 and Month OCT

Component	Unit	Physical Target	Physical Achievement	Financial Target	Financial Achievement
A. Area Expansion					
1. Fruits					
(a) High density Planting (mango, guava, litchi, ber, etc.)					
(i) New Plantation	ha		822.00		295.92
(b) Barwag (sucker), Papaya, Pineapple etc.					
(i) New Plantation	ha		910.00		422.44
(c) Fruit crops other than cost intensive crops using normal spacing					
(i) New Plantation	ha		90.00		14.20
2. Vegetables					
(a) Hybrid	ha		2254.00		760.74
B. Mission Management					
1. Project management including additional manager & project preparation cost	Nos.				4.70

Scheme Monitoring Reports

Once data is entered for respective State, one can generate reports corresponding to the data entered for it. This helps in appropriate and timely monitoring of the scheme. The generated report can also be printed.

To do this click the Reports button on the screen and you will get the following screen. For viewing the report on the basis of Monthly Data Reporting Status, Yearly Data Reporting Status, State Reports, Summary Reports and Query Reports.



Select any option from the data retrieval frame click the desired radio button from listed reports. A report will be generated and displayed on the other page as follows.

States Data Entry Reporting Status From April To March For The Year 2011-12

State Name	Apr	May	Jun	Jul	Aug	Sep	Oct	Nov	Dec	Jan	Feb	Mar
Jammu and Kashmir	NR	NR	NR	NR	NR	NR	NR	NR	NR	NR	NR	NR
Himachal Pradesh	NR	NR	NR	NR	NR	NR	NR	NR	NR	NR	NR	NR
Uttaranchal	NR	NR	NR	NR	NR	NR	NR	NR	NR	NR	NR	NR
Sikkim	R	NR	NR	NR	NR	NR	NR	NR	NR	NR	NR	R
Arunachal Pradesh	NR	NR	NR	NR	NR	NR	NR	NR	NR	NR	NR	NR
Nagaland	NR	NR	NR	NR	NR	NR	NR	NR	NR	NR	NR	NR
Mizoram	NR	NR	NR	NR	NR	NR	NR	NR	NR	NR	NR	NR
Manipur	R	R	R	R	R	R	R	R	R	NR	R	R
Tripura	NR	NR	NR	NR	NR	NR	R	R	R	R	NR	R
Meghalaya	R	NR	NR	NR	NR	R	R	R	R	R	R	R
Assam	R	NR	NR	NR	NR	NR	NR	NR	NR	NR	NR	NR
Total Reported (State)	4	1	1	1	1	2	3	3	3	2	2	4
Total Non-Reported (State)	7	10	10	10	10	9	8	8	9	9	7	

Scroll down to further see the report. If you want to take print out of the report just click Print Version button and print.

Clicking print version will open report in the Microsoft Word format. For this reason Microsoft-Word should already be installed in the PC. The screen will look like as follows:

State Wise Total Progress Report Between Selected Year 2002-03 To 2011-12 For Tripura					
(Rs. in Lakh)					
Component Name	Unit	PT	PA	FT	FA
A. Area Expansion					
1.Aromatic Plants					
(a) Cost intensive Aromatic Plants	ha	-	9.00	-	-
(b) Other Aromatic Plants	ha	-	-	125.50	125.50
2.Flowers					
(a) All	ha	2943.00	3119.00	752.70	446.94
(b) Bulbous flowers	ha	-	199.00	-	134.37
(c) Cut flowers	ha	-	100.00	-	52.51
(d) Loose Flowers	ha	-	241.00	-	40.05
(e) Model Floriculture Center			2.00	140.00	70.00
3.Fruits					

Monitoring Reports:



This report is generated for a particular state, year and month. Clicking the respective link will show the screen as follows.



All State Yearly Summary Report:

This report is generated for all HMNEH state, year-wise. Clicking the respective radio button will show the screen as follows.

All State Yearly Summary Report (Physical & Financial Achievements) for Financial Year 2011-12

(Rs. in Lakh)

Component Name	Unit	Area		Bighas		Mussam		Mussam		Tons		Total		
		PA	FT	PA	FT	PA	FT	PA	FT	PA	FT	PA	FT	PA
A. Area Expansion														
1. Plants														
1.1. Other Plants	ha			80.00	40.00	10.00	5.00	40.00	20.00	10.00	5.00	20.00	10.00	10.00
2. Flowers														
2.1. Flowering plant species (All flowering species, etc)														
▶ New Plantation	ha			50.00	10.00	20.00	20.00	10.00	10.00	10.00	10.00	10.00	10.00	10.00
▶ 2nd Year Maintenance	ha			10.00	10.00	10.00	10.00	10.00	10.00	10.00	10.00	10.00	10.00	10.00
▶ 3rd Year Maintenance	ha			10.00	10.00	10.00	10.00	10.00	10.00	10.00	10.00	10.00	10.00	10.00
▶ Replacement/Replacement of some varieties	ha			10.00	10.00	10.00	10.00	10.00	10.00	10.00	10.00	10.00	10.00	10.00
3. Fruits														
3.1. Fruits (Non-Perennial)	ha			10.00	10.00	10.00	10.00	10.00	10.00	10.00	10.00	10.00	10.00	10.00
▶ 2nd Year Maintenance	ha			10.00	10.00	10.00	10.00	10.00	10.00	10.00	10.00	10.00	10.00	10.00
▶ 3rd Year Maintenance	ha			10.00	10.00	10.00	10.00	10.00	10.00	10.00	10.00	10.00	10.00	10.00
▶ New Plantation	ha			10.00	10.00	10.00	10.00	10.00	10.00	10.00	10.00	10.00	10.00	10.00
B. Other														
B.1. Other (Non-Perennial)														
▶ 2nd Year Maintenance	ha			10.00	10.00	10.00	10.00	10.00	10.00	10.00	10.00	10.00	10.00	10.00
▶ 3rd Year Maintenance	ha			10.00	10.00	10.00	10.00	10.00	10.00	10.00	10.00	10.00	10.00	10.00
▶ New Plantation	ha			10.00	10.00	10.00	10.00	10.00	10.00	10.00	10.00	10.00	10.00	10.00

State wise Upto Financial Year Report

State Wise Yearly Total Progress Report Upto Financial Year - (Physical/Financial Targets & Achievements) for Arunachal Pradesh & Financial Year 2010-11

(Rs. in Lakh)

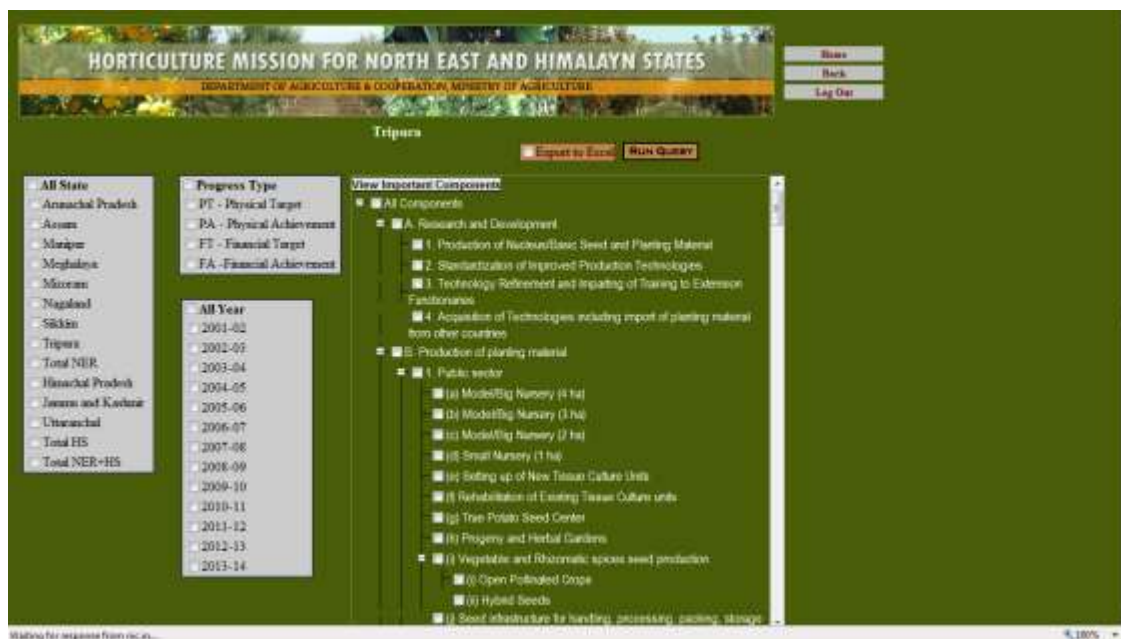
Component Name	Unit	PT	PA	FT	FA
A. Area Expansion					
1. Aromatic Plants					
(a) Other Aromatic Plants	ha	7842.00	6982.00	360.60	235.10
2. Flowers					
(a) All	ha	3050.00	2730.00	1027.00	858.00
(b) Model Floriculture Center	Nos.	1702.00	1702.00	70.00	70.00
3. Fruits					
(a) Fruits (Non-Perennial)					
▶ 2nd Year Maintenance	ha	1250.00	1250.00	37.50	37.50
▶ 3rd Year Maintenance	ha	500.00	500.00	22.50	22.50
▶ New Plantation	ha	2268.00	2005.00	217.47	162.75

State wise in between Year Report

State Wise Total Progress Report Between Selected Year 2002-03 To 2011-12 For Arunachal Pradesh						
(Rs. in Lakh)						
Component Name	Unit	PT	PA	FT	FA	
A. Area Expansion						
1. Aromatic Plants						
(a) Other Aromatic Plants	ha	7484.00	6624.00	342.70	217.20	
2. Flowers						
(a) All	ha	2900.00	2480.00	1007.50	625.50	
(b) Model Floriculture Center	Nos.	1701.00	1701.00	-	-	
3. Fruits						
(a) Fruits (Non-Perennial)						
▶ 2nd Year Maintenance	ha	1250.00	1250.00	37.50	37.50	
▶ 3rd Year Maintenance	ha	500.00	500.00	22.50	22.50	
▶ New Plantation	ha	2075.00	1812.00	143.63	78.00	

Query Report

This report is generated for a Over all. Clicking the button will show the screen as follows.



When we select any check box then we get result based on our selection.

Query Report for Selected Components, Financial Year and State

Components	Unit	2006-07													
		Assam				Manipur				Mizoram				Tripura	
		PT	PA	FT	FA	PT	PA	FT	FA	PT	PA	FT	FA	PT	
A. Production of planting material															
1. Public sector															
(a) Model/Big Nursery (4 ha)	Nos.														
(b) Model/Big Nursery (3 ha)	Nos.														
(c) Model/Big Nursery (2 ha)	Nos.	1	1	18.00	18.00										1
(d) Small Nursery (1 ha)	Nos.			6.00											3
(e) Setting up of New Tissue Culture Units	Nos.														
(f) Rehabilitation of Existing Tissue Culture units	Nos.														
(g) True Potato Seed Center	Nos.														
(h) Propagry and Herbal Gardens	Nos.														
(i) Vegetable and Rhizomatic species seed production															
(j) Open Pollinated Crops	ha														
(k) Hybrid Seeds	ha														
(l) Seed infrastructure for handling, processing, packing, storage etc. of seeds of horticulture crops	Project														
2. Private Sector															
(a) Model/Big Nursery (4 ha)	Nos.														
(b) Model/Big Nursery (3 ha)	Nos.														
(c) Model/Big Nursery (2 ha)	Nos.														1
(d) Small Nursery (1 ha)	Nos.	4	4	12.00	12.00	2	2	6.00	6.00						4
(e) Setting up of New Tissue Culture Units	Nos.														

Monthly Data Reporting Progress Report

This report is generated for a particular every month of selected year. Clicking the button will show the screen as follows.

State Wise Monthly Data Reporting Status for the Year 2012-13

S.No.	State Name	Apr	May	Jun	Jul	Aug	Sep	Oct	Nov	Dec	Jan	Feb	Mar
1	Assam	✓	✓	✓	✓	✓	✓	✓	✓	✓	✓	✓	✓
2	Assam	✓	✓	✓	✓	✓	✓	✓	✓	✓	✓	✓	✓
3	Assam	✓	✓	✓	✓	✓	✓	✓	✓	✓	✓	✓	✓
4	Assam and Karbi	✓	✓	✓	✓	✓	✓	✓	✓	✓	✓	✓	✓
5	Assam	✓	✓	✓	✓	✓	✓	✓	✓	✓	✓	✓	✓
6	Mizoram	✓	✓	✓	✓	✓	✓	✓	✓	✓	✓	✓	✓
7	Mizoram	✓	✓	✓	✓	✓	✓	✓	✓	✓	✓	✓	✓
8	Nagaland	✓	✓	✓	✓	✓	✓	✓	✓	✓	✓	✓	✓
9	Sikkim	✓	✓	✓	✓	✓	✓	✓	✓	✓	✓	✓	✓
10	Tripura	✓	✓	✓	✓	✓	✓	✓	✓	✓	✓	✓	✓
11	Uttaranchal	✓	✓	✓	✓	✓	✓	✓	✓	✓	✓	✓	✓
Total Reported		11	11	10	8	8	8	8	8	9	9	10	9
Total Not Reported													

2. Changing Password

Click the Change Password button to change the password. A screen will be displayed as follows.

The screenshot shows a web page with a green background. At the top, there is a banner with the text "HORTICULTURE MISSION FOR NORTH EAST AND HIMALAYN STATES" and "DEPARTMENT OF AGRICULTURE & COOPERATION, MINISTRY OF AGRICULTURE". Below the banner, the word "Tripura" is centered. On the right side, there are three buttons: "Home", "Back", and "Sign Out". The main content area contains three text input fields labeled "Old Password", "New Password", and "Confirm Password". A "Save" button is positioned below the "Confirm Password" field. The browser's zoom level is set to 100%.

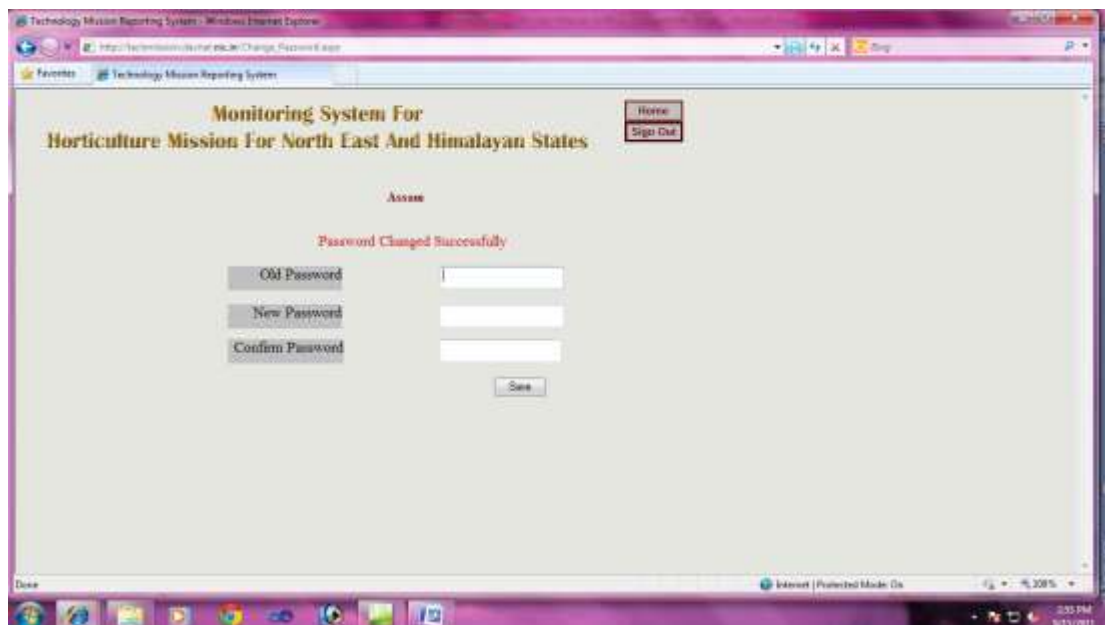
Fill in the textbox of Old Password, New Password and Confirm Password then click submit button. New password and Confirm password should be same (this is to confirm that you should check the caps lock button of keyboard is off). If you made correct entry and clicked submit button then your password will be changed as in following screen.

The screenshot shows the same web page as above, but the text input fields for "Old Password", "New Password", and "Confirm Password" are now filled with asterisks (*****). The "Save" button is still present below the "Confirm Password" field. The browser's zoom level is set to 100%.

If entries are not correct then it will display a screen as follows.



If the password is matched then the password will be changed successfully and the message will be displayed accordingly. This will be shown as follows:



You are advised to log out after this session. You may also click Home to continue.

MUST REMEMBER: Logout before closing the application.

Quitting Application

Do not forget to click the LOGOUT button to exit from the application. It will take you to the Login page. Closing the window can also close the application but you must always log out for security and data integrity reasons.

For any query or problem, you are advised to send a mail at the following address:

- | <u>Name & Address</u> | <u>Email addresses</u> |
|---|-------------------------------|
| 1) Mr. Rakesh Vardhan
Technical Director &
National Project Director
(Horticulture Computerizations)
341, B-Wing, Krishi Bhavan
New Delhi-110 001 | rvardhan@nic.in |
| 2) Mr. D.V. Singh -
Senior System Analyst
NIC-DAC Computer Center
114, B-Wing, Shastri Bhawan
New Delhi-110 001 | dv-singh@nic.in |
| 3) Miss Amrita Ranjan
Sr. Programmer (HMNEH)
Ministry of Agriculture
341, B-Wing, Krishi Bhawan
New Delhi-110 001 | - hmnehs.nic@gmail.com |